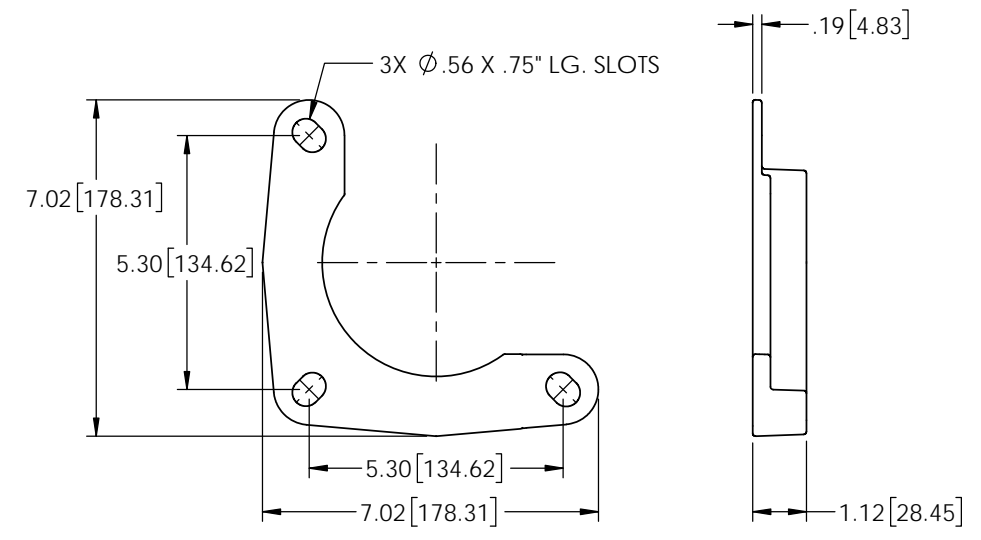
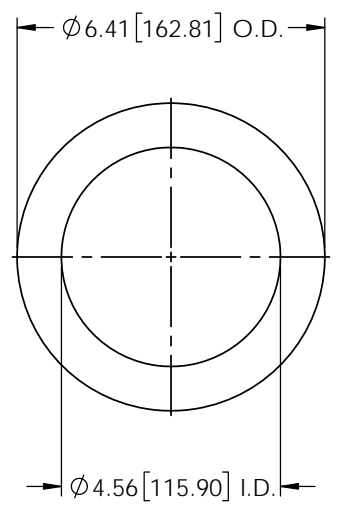


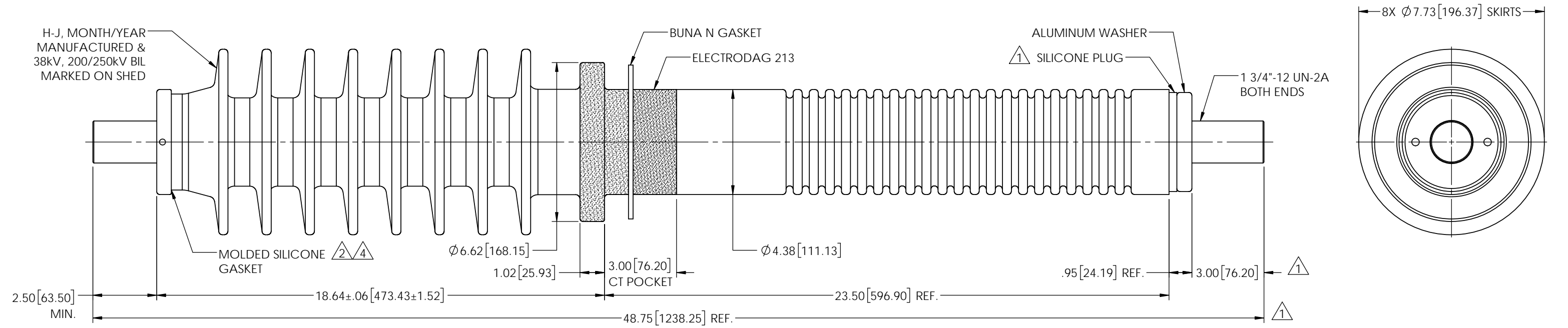
REVISIONS					
REV.	DATE	ECN #	DESCRIPTION	BY	APPROVED
1	2/8/2022	HJ22-014	CHANGE TO MOLDED SILICONE GASKET & PLUG, 48.75 WAS 48.06, 3.00 WAS 2.75	CLS	CJT
2	5/25/2022	HJ22-088	REVERT TO GARLOCK GASKET	CLS	CJT
3	7/28/2022	HJ22-146	CANTILEVER LOAD RATINGS WERE 625N/1250N	MAD	CJT
4	3/21/2023	HJ23-062	CHANGE TO MOLDED SILICONE GASKET	CLS	MP



ROOF MOUNTING FLANGE
 REQUIRED: 2 PER ASSEMBLY
 MATERIAL: ALUMINUM



BUSHING TO ROOF GASKET
 REQUIRED: 1 PER ASSEMBLY
 MATERIAL: .19" ±.020" NITRILE BUNA N



TECHNICAL CHARACTERISTICS	
SPECIFICATIONS	VALUE
RATED MAXIMUM VOLTAGE	38kV
RATED CONTINUOUS CURRENT	2000A
BASIC IMPULSE LEVEL (BIL)	200kV
RATED FREQUENCY WITHSTAND (DRY) - 60s	80kV
RATED FREQUENCY WITHSTAND (WET) - 10s	75kV
CREEP DISTANCE (MINIMUM)	
TOP	40.86" [1037.72mm]
BOTTOM	24.54" [623.31mm]
STRIKE DISTANCE (MINIMUM)	
TOP	17.08" [433.83mm]
BOTTOM	20.35" [516.89mm]
CANTILEVER OPERATING LOAD	1000N
CANTILEVER TEST LOAD	2000N
INSTALLATION TORQUE	130 in-lb
PORCELAIN COLOR	GRAY - MUNSELL 5BG 7.0/0.4
APPROXIMATE WEIGHT	82.2lb [37.3kg]

COMPONENTS	MATERIAL
INSULATOR	WET PROCESS PORCELAIN
CONDUCTOR	COPPER C11000, TIN PLATED
TERMINAL	
TOP	TIN PLATED
BOTTOM	TIN PLATED
GASKET	NITRILE BUNA N
CLAMP	ALUMINUM

NOTES:

- PORCELAIN TOLERANCE ±3% WITH NOTHING LESS THAN ±.03", UNLESS OTHERWISE NOTED.
- ASSEMBLY INCLUDES (2) EXTRA BRASS NUTS & (2) EXTRA BRASS WASHERS, PACKED IN BULK.

THIRD ANGLE 	TOLERANCES (EXCEPT AS NOTED)		H-J ENTERPRISES, INC. 3010 HIGH RIDGE BLVD. HIGH RIDGE, MO. 63049 USA PHONE 1-636-677-3421 FAX 1-636-376-1915	
	DECIMAL ± .032"/.8mm		AIR-TO-AIR PORCELAIN BUSHING ASSEMBLY 200kV BIL • 38kV • 2000A	
PROPRIETARY AND CONFIDENTIAL THE INFORMATION CONTAINED IN THIS DRAWING IS THE SOLE PROPERTY OF H-J ENTERPRISES, INC. ANY REPRODUCTION IN PART OR AS A WHOLE WITHOUT THE WRITTEN PERMISSION OF H-J ENTERPRISES, INC. IS PROHIBITED.	FRACTIONAL ±	MATERIAL SEE DRAWING	CHK'D LO APP'D 06/10/20 SCALE N.T.S.	DRAWING NO. AS1462-027
ANGULAR ± 2 Degrees	DRAWN BY CLS	DATE 06/10/2020		